



Figure No. 6405



Figure No. 6407

SINGLE CLAPPER TWO-WAY INLETS

An exposed auxiliary inlet connection with 500 G.P.M. inlet capacity to supplement fire protection water supply. Exposed design provides an economical method of satisfying Fire Dept. inlet requirements.

STANDARD EQUIPMENT: Cast brass two-way inlet body only with single swing clapper and pin lug swivel back or angle outlet connection as selected by figure number.

SPECIFY THREAD.

BRANDING: "Auto Spkr." **FINISH:** Cast Brass

***U/L LISTED AND FM APPROVED**

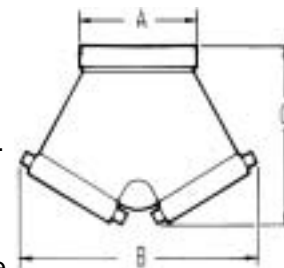
OPTIONAL FINISHES:

PB - Polished Brass

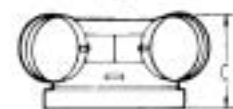
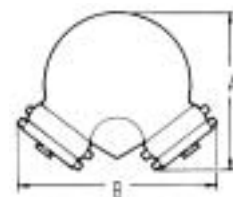
RC - Rough Chrome Plated

PC - Polished Chrome Plated

Model	Outlet Style	Dimensions		
		A	B	C
6405	Back	5 1/4	8 5/64	6 1/2
6407	Angle	6 5/16	7 11/16	4 3/4



6405 Back Outlet



6407 Angle Outlet

DOUBLE CLAPPER TWO-WAY INLETS



Figure No. 6410-6415



Figure No. 6420-6425

An exposed auxiliary inlet connection with 500 G.P.M. Inlet capacity to supplement fire protection water supply. Exposed design provides an economical method of satisfying Fire Department Inlet requirements.

STANDARD EQUIPMENT: Cast brass two-way inlet body only with double drop clappers and pin lug swivels; back or angle outlet connection as selected by figure number. Branding as selected. **SPECIFY THREAD AND BRANDING.**

BRANDING: "Standpipe", "Auto Spkr.", "Standpipe-Sprinkler"

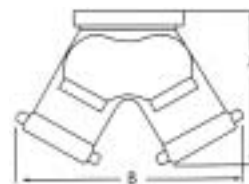
FINISH: Cast Brass

OPTIONAL FINISHES:

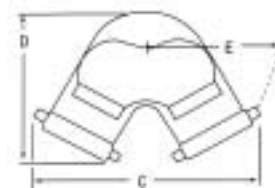
PB - Polished Brass

RC - Rough Chrome Plated

PC - Polished Chrome Plated



6410 Back Outlet



6420 Angle Outlet

***U/L LISTED AND FM APPROVED
NY BSA-MEA APPROVED**

Outlet Style		Size	Dimensions				
Back	Angle		A	B	C	D	E
*6410		4 X 2 1/2 X 2 1/2	9 5/8	12 1/4			
	6420	4 X 2 1/2 X 2 1/2			11 3/4	9 5/8	7 1/4
6412		6 X 2 1/2 X 2 1/2	10 1/4	11 3/4			
	6422	6 X 2 1/2 X 2 1/2			12 1/2	10 1/8	7 1/2
6413		4 X 3 X 3	10	12 1/2			
	6423	4 X 3 X 3			12 1/2	10 1/8	7 1/2
6414		5 X 3 X 3	10 1/8	12 1/2			
	6424	5 X 3 X 3			12 1/4	10 1/2	7 1/2
6415		6 X 3 X 3	10 3/8	12 1/2			
	6425	6 X 3 X 3			12 1/4	10 7/8	7 1/4